

Identify Your Motorhome

Two items will help you to identify your motorhome—the Options Codes listed on the *Retail Price Sheet* (similar to a window sticker on an automobile) and the *Certification Label*. Option Codes are discussed below and the *Certification Label* is explained on the next page.

Option Codes

Option Codes (also called Feature Numbers) list optional features that may be installed on your unit. The optional features that were installed can be found on the *Retail Price Sheet* that you would have received when you purchased your unit. The options are listed under the section entitled **OPTIONS INSTALLED BY MANUFACTURER**. The option code (or feature number) will be listed on Winnebago Industries, Inc. drawings to identify any geometry and/or notes that pertain to the optional features.

If you do not have the *Retail Price Sheet*, please contact your dealer or Winnebago Industries, Inc. Service Administration department for the list of options installed on your unit.

The first three characters is the option code (or feature number), a description of the optional feature is listed next, followed by the retail price of the option.



OPTIONS INSTALLED BY MANUFACTURER	RETAIL
1D5 ENTERTAINMENT CENTR/EXT W/CD	
13Y WINDOWS-COACH-DUAL PANE	
15T AIR SPRINGS, REAR	
25G DVD/VCR,STEREO,W/REMOTE	

Option Code

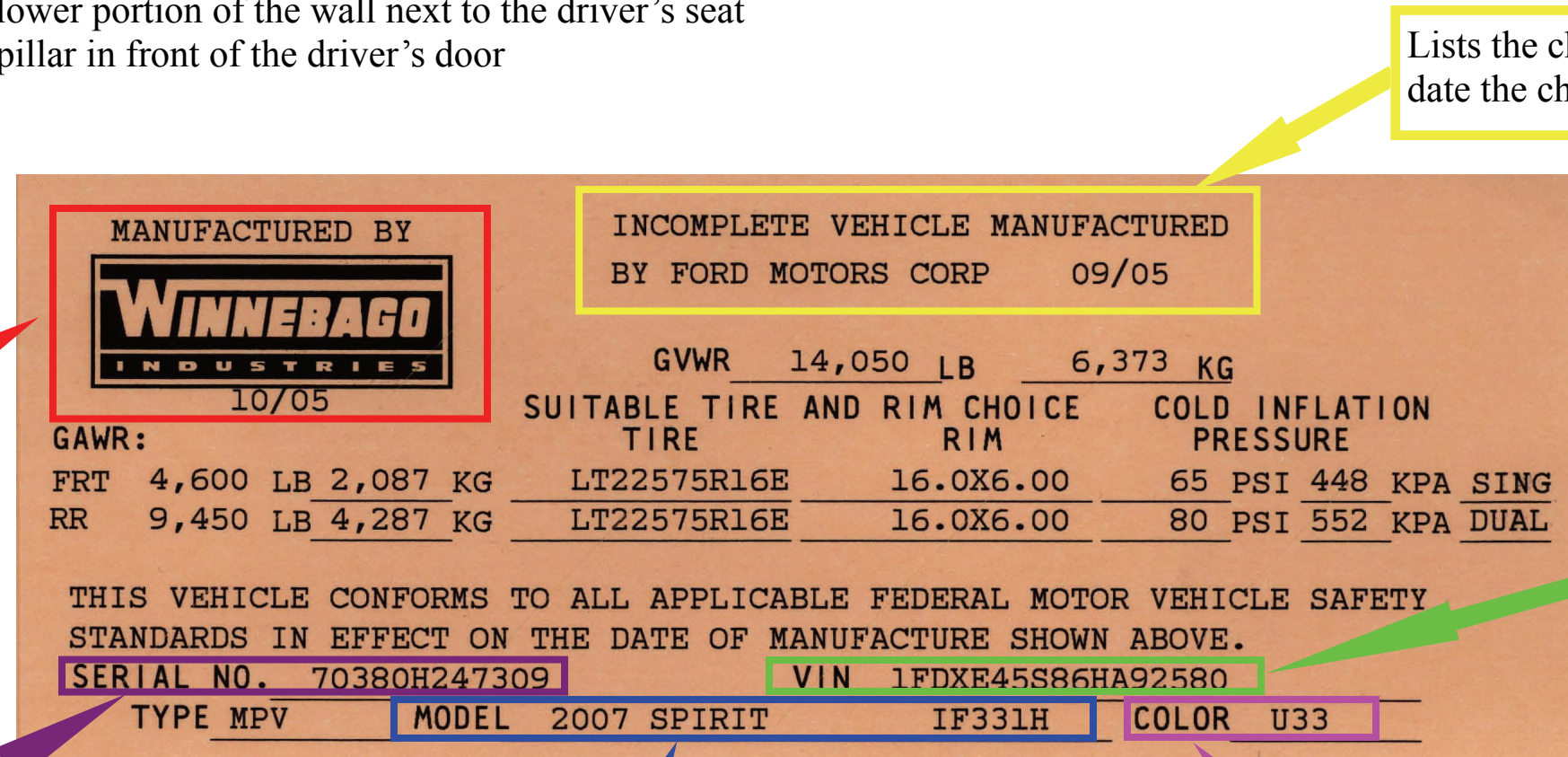
Description of the optional feature

Certification Label

The *Certification Label* lists important information about your unit. The *Certification Label* is permanently attached to the unit in the driver's door area and a copy is included in the InfoCase. Explained below are some of the items on the *Certification Label*.

Where to find the Certification Label:

- InfoCase
- Attached to the unit—the certification label will be permanently attached in one of the following locations:
 - Attached to the front lower portion of the driver's door
 - Attached to the lower portion of the wall next to the driver's seat
 - Attached to the pillar in front of the driver's door



Lists the chassis manufacturer and the date the chassis was manufactured

This lists the date the vehicle was manufactured by Winnebago Industries, Inc.

This is the chassis Vehicle Identification Number (VIN) of your vehicle. The 10th character signifies the model year of the chassis.

- S = 1995
- T = 1996
- V = 1997
- W = 1998
- X = 1999
- Y = 2000
- 1 = 2001
- 2 = 2002
- 3 = 2003
- 4 = 2004
- 5 = 2005
- 6 = 2006
- 7 = 2007
- 8 = 2008
- 9 = 2009

This is the serial number assigned to your vehicle by Winnebago Industries, Inc. The 6th character signifies the model year of your unit.

5 = 1995	A = 2000	F = 2005
6 = 1996	B = 2001	G = 2006
7 = 1997	C = 2002	H = 2007
8 = 1998	D = 2003	J = 2008
9 = 1999	E = 2004	K = 2009

Lists the Winnebago Industries, Inc. product model of your vehicle

Specifies the interior base color of the vehicle