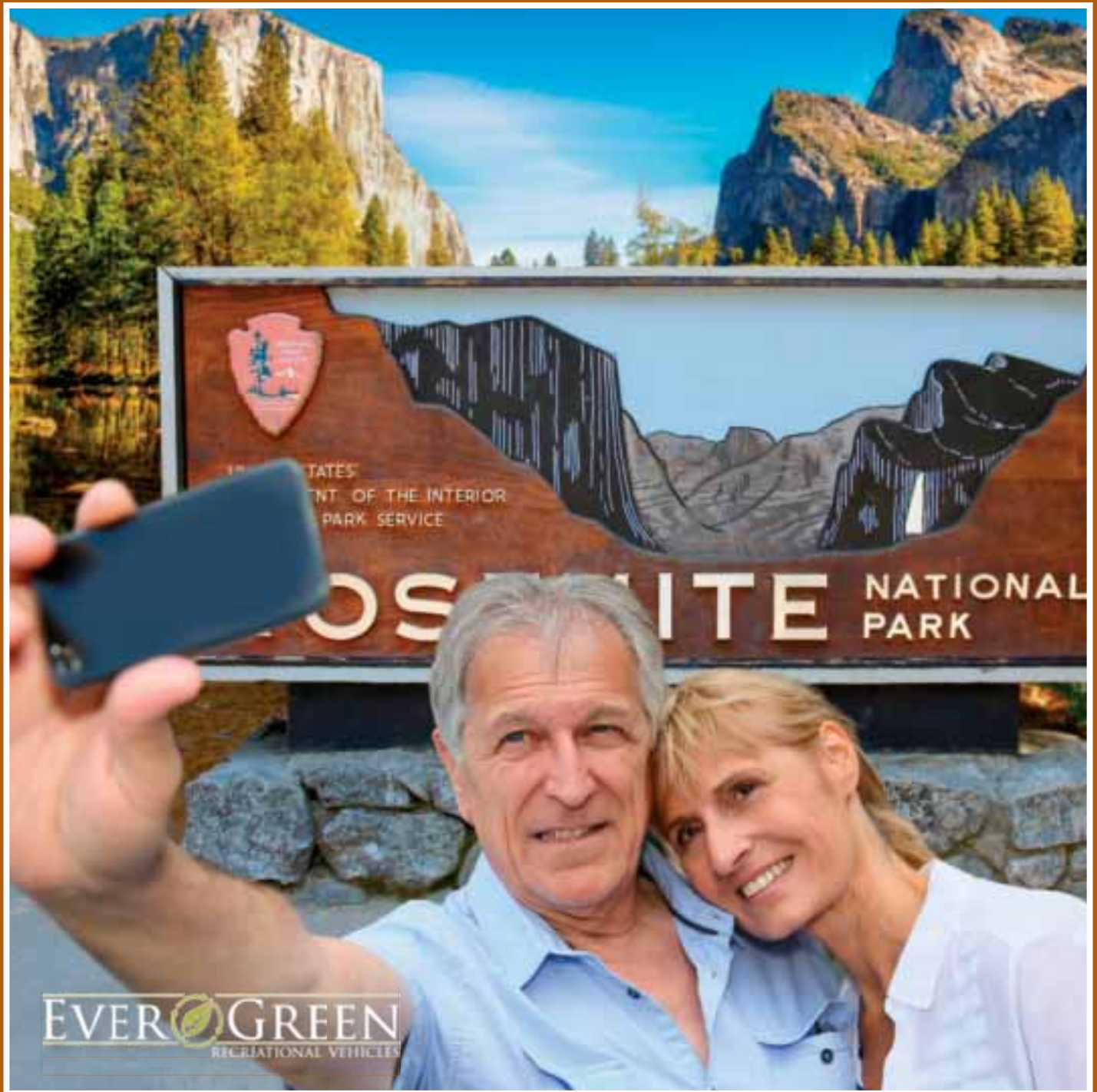


LIGHTWEIGHT, LONG-LASTING

EVER-LITE

THE COMPOSITE TRAVEL TRAILER



Every Trail Leads You Home.




The kitchen of the Ever-Lite 29KIS is housed in the slide out to provide more room in the food preparation and serving areas around the island.



A front to back view of the 29KIS shows the overstuffed sofa that turns into a queen- sized bed that sleeps two.



Composites Make Ever-Lite More Durable Yet Lighter.



The composite Ever-Lite travel trailer is the original flagship brand of EverGreen. The Ever-Lite, with its groundbreaking composites and exclusive CompositTek construction, remain an industry-leading composite travel trailer. Discriminating buyers looking for an ultra-durable, longer lasting investment choose Ever-Lite.

Composites make the Ever-Lite a full 20 percent lighter than conventionally built RVs. This reduced weight factor allows you to take it all with you for an enhanced camping experience. Additionally, Ever-Lite composite materials are impervious to moisture resulting in a camper resistant to rot, mold and mildew.





ABOVE: The bedroom slide on the 292FLBS opens up the living space for access to the full wardrobe and built-in dresser.



ABOVE: The Ever-Lite features raised panel cabinets that are screwed and glued—never stapled.

BELOW: This three-burner cook top with glass cover adds a contemporary touch to the kitchen.

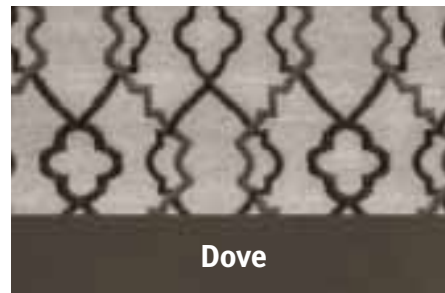
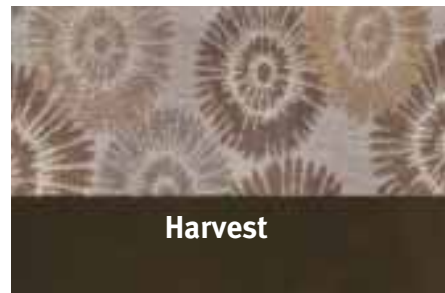


COMFORT AND QUALITY

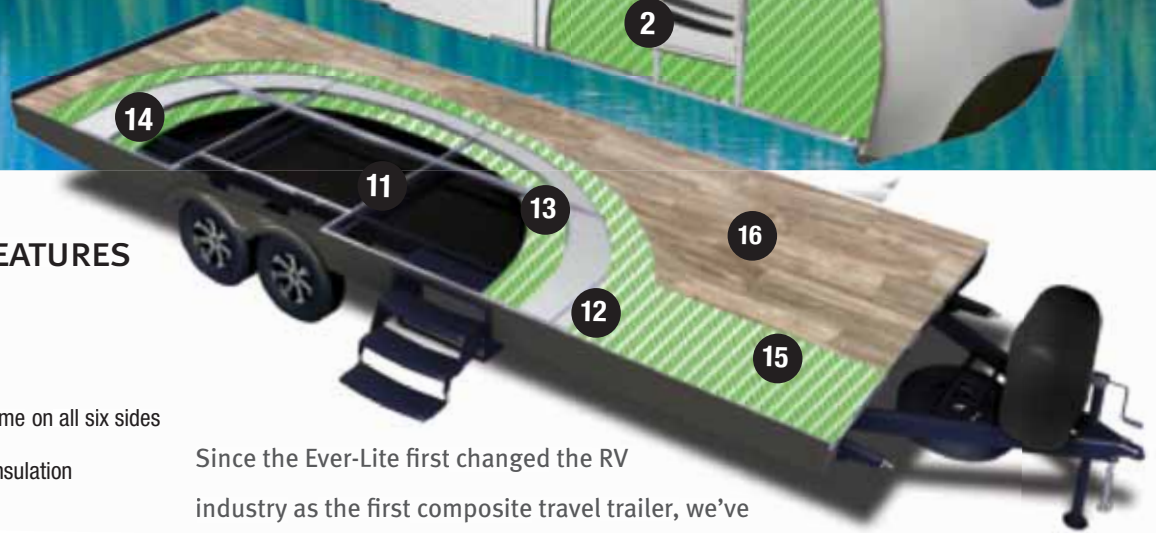
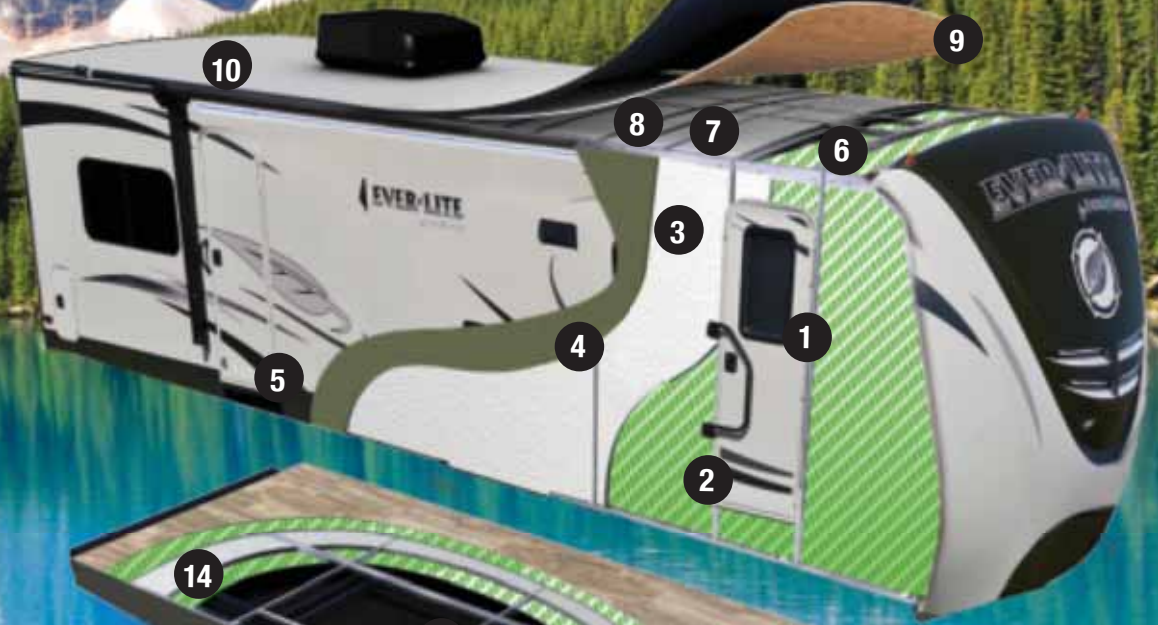
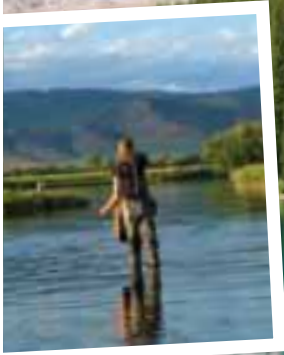
As the top-of-the-line EverGreen brand, the Ever-Lite is packed with all the comfort and quality of home. From sumptuous master bedrooms with standard queen beds and optional king beds, to quality solid-wood cabinetry with raised panels throughout, Ever-Lite is your best investment.

Roomy baths, many with radius glass shower systems, feature skylights, power exhaust and large medicine cabinets with mirrors.

FABRIC CHOICES



ONLY EVER-LITE HAS THE COMPOSITE DIFFERENCE



CONSTRUCTION FEATURES

Walls

- 1 CompositTek™ inner liner
- 2 Fully welded aluminum frame on all six sides
- 3 High-density, block foam insulation
- 4 Substrate
- 5 High-gloss Gel Coat Fiberglass

Roof

- 6 CompositTek™ inner liner
- 7 Fully welded, crowned aluminum frame
- 8 High-density, block foam insulation
- 9 Plywood substrate
- 10 Reflective, white TPO roofing

FLOOR

- 11 Steel I-beam frame
- 12 Substrate
- 13 Fully welded aluminum frame
- 14 High-density, block foam insulation
- 15 Substrate
- 16 Padded "No-Crack" vinyl floor

Since the Ever-Lite first changed the RV industry as the first composite travel trailer, we've been busy focusing on the innovation front with new manufacturing and material specifications to build a better, lighter weight trailer for your family.



DuraLite™ Double Welded Aluminum Structure

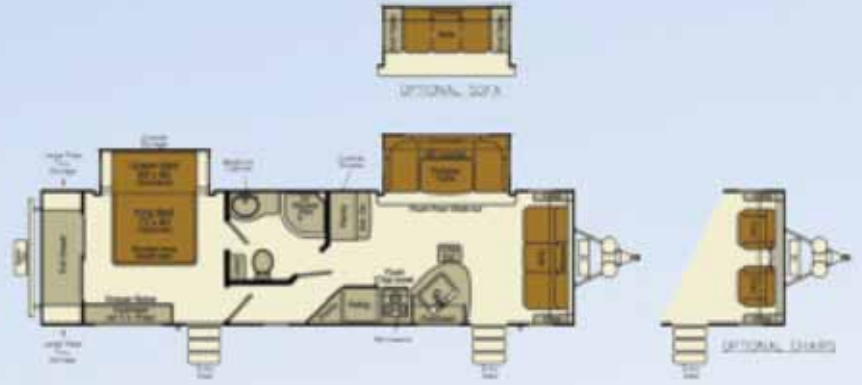
Ever-Lite is built on the DuraLite Double Welded Aluminum Structure. It includes six-sided double-welded aluminum frame construction in the walls, roof and floors, with header framing around all doors, windows and baggage door openings.

About CompositTek™ Construction

Four times the strength of plywood, CompositTek walls, floor and inner roof panels are far superior to wood. Composite materials resist the moisture, rot, mold and mildew that destroy other travel trailers. Composites also weigh as much as 20 percent less, making the coach lighter and easier to tow. Where composites replace wood in the Ever-Lite, there are less harmful VOC out-gassing of compounds like formaldehyde.



29 KIS



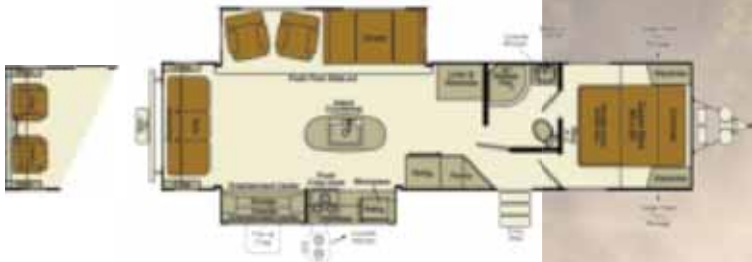
29 2 FLBS



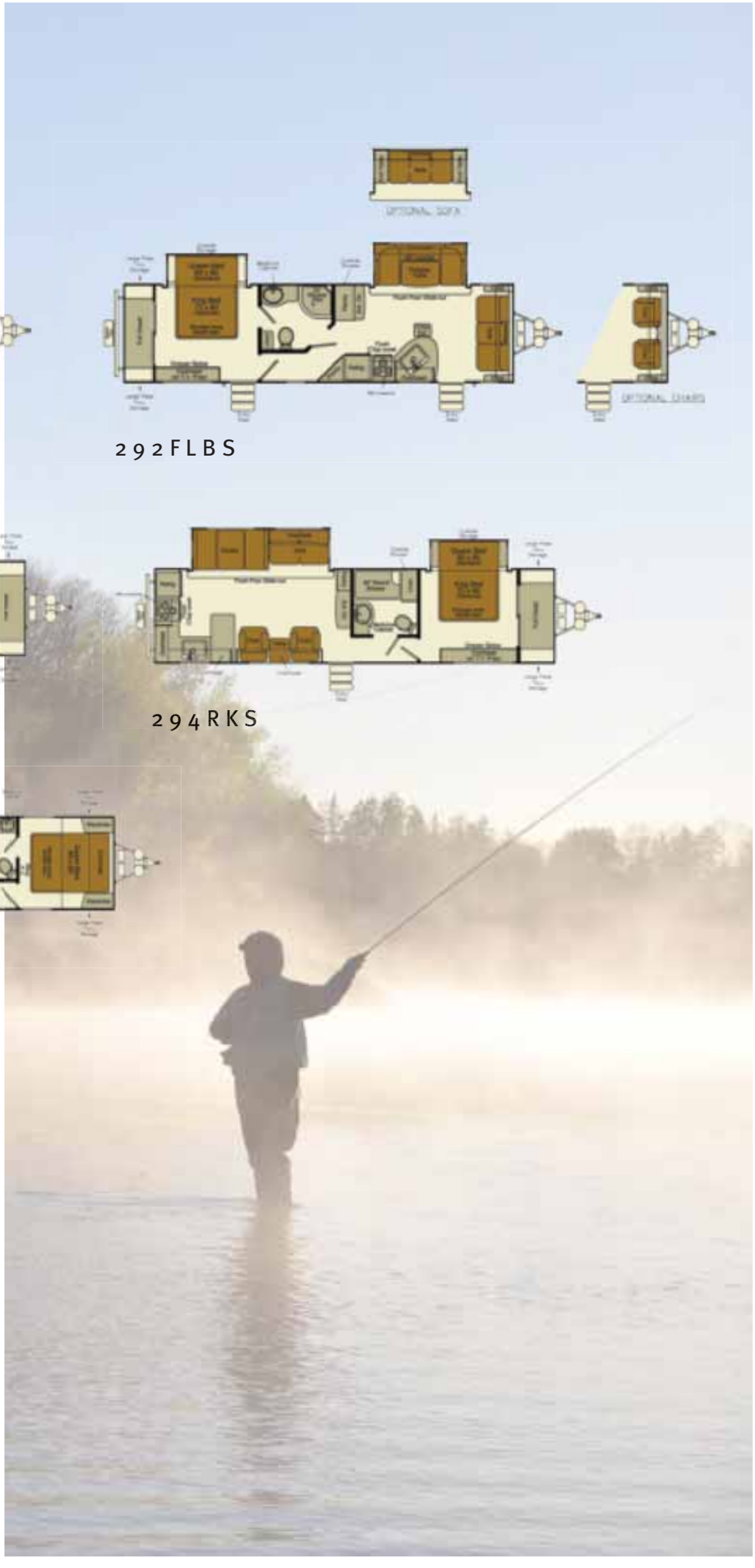
32 REW



29 4 RKS



32 2 RLT



298RLS	331TTS	322RLT
6300	7705	7325
650	910	790
8795	9995	9995
56	56	56
58	58	29
29	29	29
40	40	40
2005	1800	2180
34' 11"	37' 8"	37' 4"
10' 10"	10' 10"	10' 10"
8' 1"	8' 1"	8' 1"
60x80	60x80	60x80
20'	15' / 10' 6"	16'
5-D	ST225/75R15-D	ST225/75R15-D

STANDARD AND OPTIONAL EQUIPMENT

EXTERIOR

- Crown roof with fully laminated, white TPO construction
- Vacuum laminated, welded aluminum sidewalls, roof and floors
- Automotive high gloss gel coat exterior with composite substrate
- Exterior speakers
- Finished pass-through storage compartments
- Frameless automotive style windows
- Entry step light
- LED awning light strip

INTERIOR

- Composite inner shell—ceiling and walls
- Skylight in living area
- LED interior lighting package
- Screwed and glued cabinetry/solid wood raised panel doors
- Ceiling crown moldings
- Wall-mounted interior light switches
- Padded “No Crack” vinyl flooring throughout
- Residential-style upholstered furniture
- Residential-style entertainment center with optional fireplace (most models)
- Barreled and ducted laminated ceiling

KITCHEN

- Power exhaust range hood with light
- Plywood drawers with full-extension ball bearing guides
- 8-cubic foot double-door refrigerator/freezer
- Flush mount three-burner range with glass top and oven
- Full-size composite sink with cover
- Pull-out spray faucet
- Microwave

BEDROOM

- 80-inch innerspring pillow top mattress
- Reading LED indirect lighting above bed
- Lift-up bed with gas struts and storage
- TV prep

BATHROOM

- Skylight over shower/tub
- Large medicine cabinet/mirror
- Recessed vanity light
- Full tub/shower surround
- Hand sprayer in shower/tub
- Power exhaust fan
- Glass shower door (NA 318BHS)

UTILITIES

- Satellite/cable hookups
- High-capacity ducted furnace
- Water pump with winterizing inlet
- LP quick disconnect (gas grill ready)
- LP harness with machine-crimped fittings
- CO, LP smoke detectors
- Fire extinguisher
- Tank monitor system
- 55-amp converter with shore line
- Marine-style detachable power cord with LED light
- Door-side lower receptacle (110V)
- USB port

EVER-LITE™ VALUE PACKAGE (INCLUDED)

- Fully enclosed, heated underbelly
- Six-side aluminum structure
- AM/FM/CD/DVD with Bluetooth capability
- (2) 20-pound LP tanks with hard shell cover
- Six-gallon gas/electric water heater with DSI
- Toilet with foot-flush pedal

- Outside shower
- Power awning
- Spare tire and carrier
- Black tank flush
- Swing out grab bar
- Fiberglass front cap with LED lights
- 13,500 BTU ducted A/C quick chill function
- 15-inch aluminum wheels
- TV/radio antenna

OPTIONAL EQUIPMENT

- 15,000 BTU A/C IPO 13,500 BTU A/C
- 50 AMP service with 2nd A/C prep
- 2nd 13,000 A/C (requires 50 AMP prep option)
- 32-inch TV upgrade
- 50-inch TV upgrade (276FLS only)
- 74-inch Hide-A-Bed sofa replace trundle bed (318BHS only)
- E-Cube IPO trundle bed (318BHS only)
- Solid surface counters
- Dual pane windows
- Fireplace with remote control
- Freestanding table and four chairs
- Power tongue jack
- Two swivel chairs IPO front sofa (276FLS, 292FLBS only)
- King bed IPO queen bed and night shades (bed slide models only)
- High-output 10 blade fan in bedroom
- High-output 10 blade fan in bathroom
- Power front and rear stabilizer jacks
- 62-inch sofa IPO dinette (232RBS, 242RBS, 292FLBS only)

THE EVERGREEN PEACE OF MIND WARRANTY.

We're so confident in our quality that we're willing to stand behind our travel trailers and fifth-wheels with one of the best warranties in the industry.

- 12-Year Roofing Materials Warranty
- 3-Year Limited Structural Warranty*
- 1-Year Limited Warranty
- 1-Year Free Roadside Assistance Program

*Contact your EverGreen dealer for an applicable copy of all limited warranties

JOIN US ON FACEBOOK.

SHARE YOUR EVERGREEN CAMPING SELFIE!

WIN A NATIONAL PARK PASS



COMPLIMENTS OF:



WWW.GOEVERGREENRV.COM

10758 COUNTY ROAD 2 • MIDDLEBURY, IN 46540
PHONE: (574) 825-4298 • FAX: (574) 825-4299